

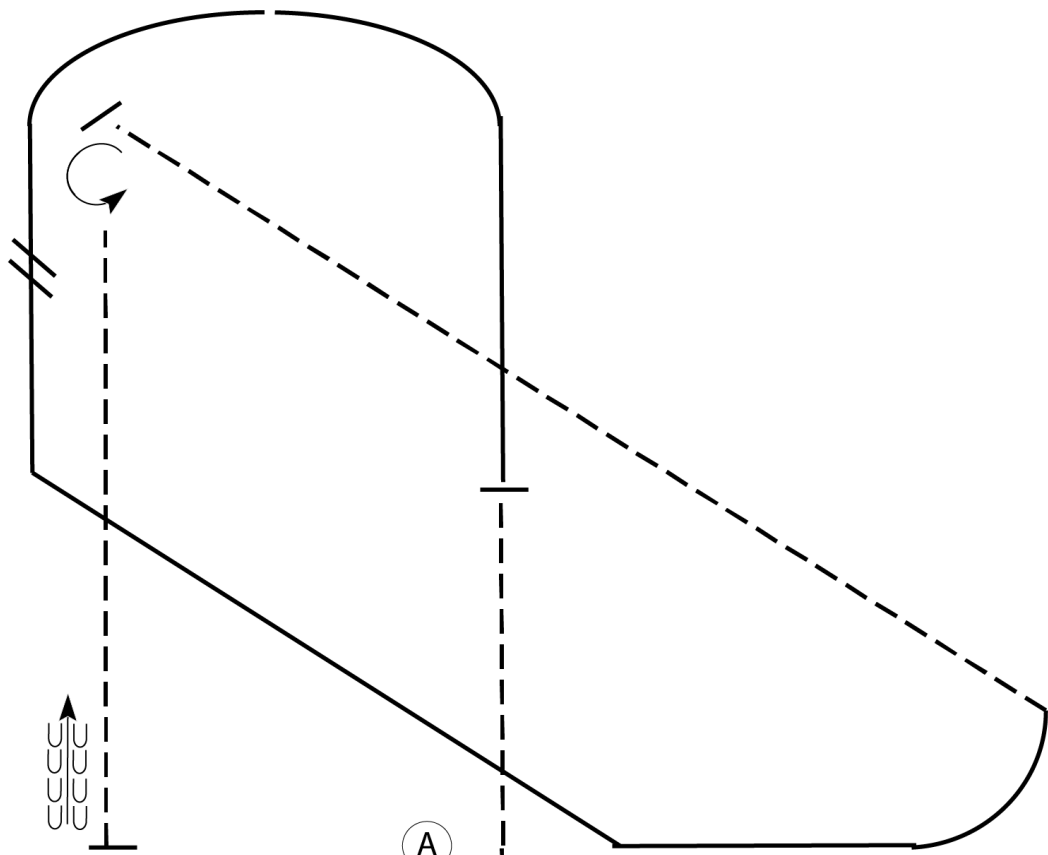
2021 Texas Festival

Hunt Seat Equitation (Class #44,45, Nov Youth, Nov Am)

Show Date: April 2021

w w w . H o r s e S h o w P a t t e r n s . c o m

w w w . H o r s e S h o w P a t t e r n s . c o m



Be ready before A.

1. Walk to A. Left diagonal trot then halt for 3 seconds.
2. Right lead counter canter in half circle.
3. Perform a simple lead change.
4. Left lead straight then continue canter on diagonal and around corner.
5. Right diagonal trot on the diagonal line.
6. Halt and perform a forehand turn left to change direction. Sitting trot until even with A.
7. Halt and back approximately 2 horse lengths.

Walk	-----
Trot	- - - - -
Extended Trot	— — — — —
Canter	—————
Leg Yield	
Lead Change	↘ ↙
Back	← ← ← ← ←
Marker	⊙
Sidepass	← — — — — →
Hand Gallop	— — — — —

[HSE/1-84]

Pattern Provided by:

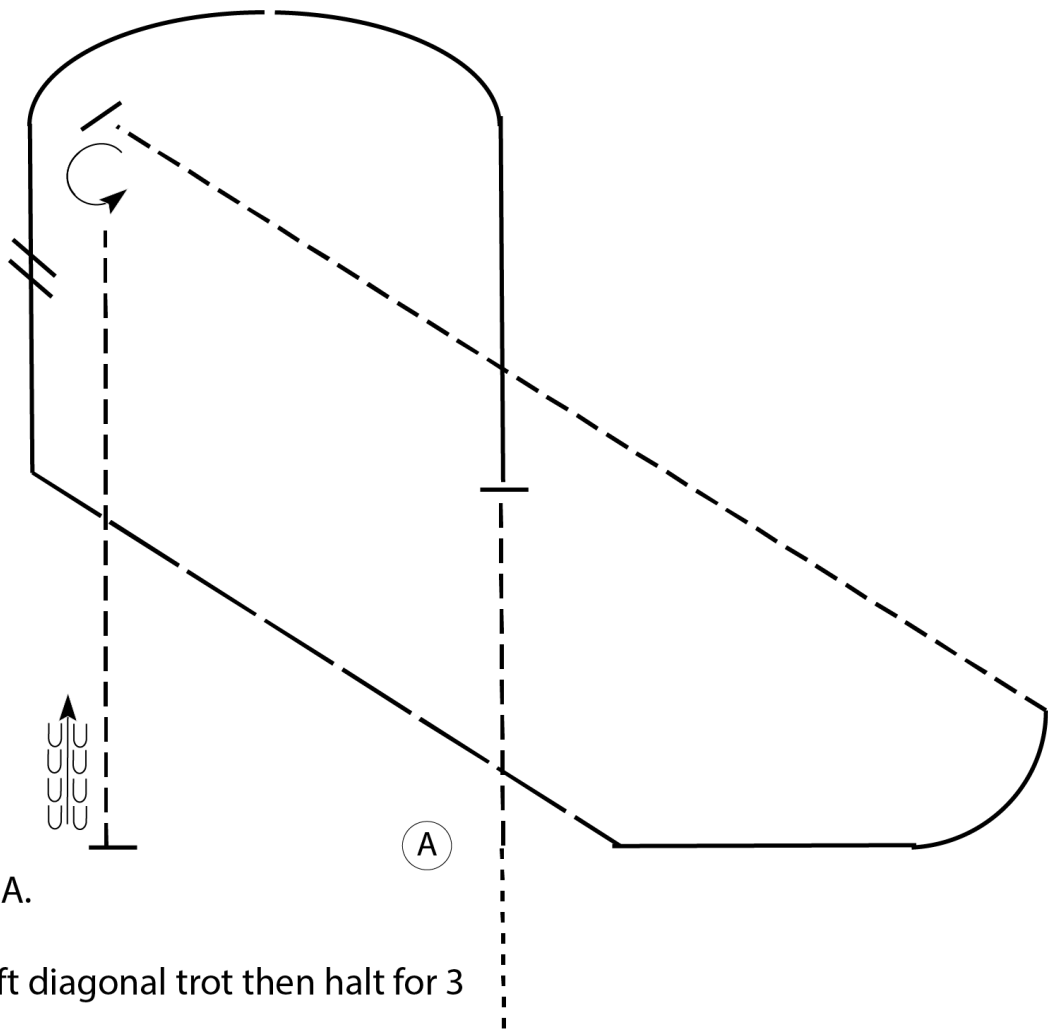
2021 Texas Festival

Hunt Seat Equitation (Class # 46,47,48 Youth, Am, Select)

Show Date: April 2021

www.HorseShowPatterns.com

www.HorseShowPatterns.com



Be ready before A.

1. Walk to A. Left diagonal trot then halt for 3 seconds.
2. Right lead counter canter in half circle.
3. Change leads.
4. Left lead straight then hand gallop on diagonal.
5. Left lead canter around corner.
6. Right diagonal trot half the line then 2 point the trot.
7. Halt and perform a forehand turn left to change direction. Sitting trot until even with A.
8. Halt and back approximately 2 horse lengths.

Walk	-----
Trot	- - - - -
Extended Trot	-----
Canter	—————
Leg Yield	
Lead Change	↘
Back	←←←←←
Marker	Ⓚ
Sidepass	←-----→
Hand Gallop	—————

[HSE/2-84]

Pattern Provided by:

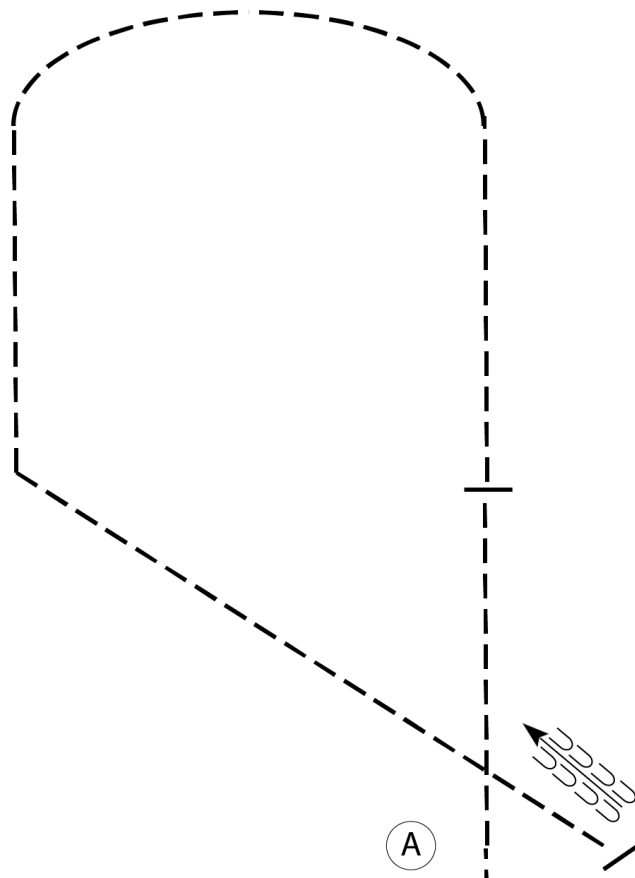
2021 Texas Festival

Hunt Seat Equitation (Class # 41, 42,43 W/T Youth, Amateur, Small Fry)

Show Date: April 2021

w w w . H o r s e S h o w P a t t e r n s . c o m

w w w . H o r s e S h o w P a t t e r n s . c o m



Be ready before A.

1. Walk to A. Left diagonal trot then halt for 3 seconds.
2. Right diagonal trot in a half circle and straight to the diagonal line.
3. Sitting trot on the diagonal line.
4. Halt and back approximately 2 horse lengths.

Walk	-----
Trot	- - - - -
Extended Trot	-----
Canter	—————
Leg Yield	
Lead Change	↙ ↘
Back	← ← ← ← ←
Marker	⊙
Sidepass	← - - - - →
Hand Gallop	—————

[HSE/WT-84]

Pattern Provided by: